

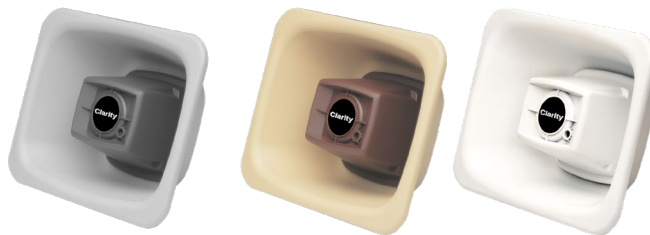
TECHNICAL SPECIFICATION

4-WATT FLEXHORN™
MODEL S-604, S-604-25

Clarity
by Valcom

FEATURES:

Weather-Proof
70-Volt or 25-Volt Transformer
All Stainless-Steel Hardware
Flexible Mounting: Recessed & Surface



DESCRIPTION:

The FlexHorn is used to provide voice paging and background music. The horn is weather proof and can be used in indoors or outside in environments ranging from -20 to +55 degrees centigrade. The FlexHorn may be mounted to walls using the supplied universal bracket; mounts to steel "I" beams using the supplied "C" clamp or flush mounted in a wall.

Specifications:

SPEAKER

3.5" (8.9cm)

MAGNET WEIGHT

5 oz.

MAGNET MATERIAL

Ceramic

VOICE COIL

.75 dia. (1.9cm) 12 W

SOUND PRESSURE LEVEL

102 dB at 1 Meter on Axis With 1-Watt Input at 1 kHz

LINE TRANSFORMER

70-Volt Transformer (Model S-604)
25-Volt Transformer (Model S-604-25)

TRANSFORMER TAPS

4, 2, 1, and .5 Watts

FREQUENCY RESPONSE

300 Hz - 11 kHz

POWER RATING

4-Watts Continuous

HOUSING AND FINISH

Constructed with filled polypropylene Available in White (W), Gray (GY) Beige (BG) Bracket fabricated with 16 AWG CRS and finished with Black weather resistant E coat. All hardware is stainless steel.

ENVIRONMENT

Temperature: 0 to 50 °C (32 to 122 °F)
Humidity: 0 to 85% Non-Precipitating

DIMENSIONS AND WEIGHT

6.8" (17.3 cm) H x 8.3" (21.1 cm) W x 3.3" (8.4 cm) D
Weight: 2.75 lbs (1.25 kg)

NOTE: 25-Volt Speakers may be used as One-Way or Two-Way (talkback) speakers. This functionality is determined by the equipment used to source audio to/from the speaker.

ARCHITECTS' AND ENGINEERS

The paging horn shall be a high efficiency re-entrant type horn. It shall be equipped with a universal mounting bracket and a "I" beam clamp.

The frequency response of the horn shall be 300 Hz to 11 kHz. The horn shall have a continuous power rating of 4 watts. Dispersion shall be 120 degrees horizontal and 90 degrees vertical. Sound pressure level with a 1-watt input @ 1 kHz shall be 102 dB measured at 4 feet on axis.

Model S-604 shall operate on 70-volt speaker lines and have tap settings of 4, 2, 1 and .5 watts.

Model S-604-25 shall operate on 25-volt speaker lines and have tap settings of 4, 2, 1 and .5 watts. The housing shall be constructed of filled polypropylene and be available in gray, white or beige. All hardware shall be stainless steel. The universal bracket shall be constructed of 16 AWG CRS and finished with a weather resistant black E-Coat. Dimensions of the horn shall be 6.8" (17.3 cm) H x 8.3" (21.1 cm) W x 3.3" (8.4 cm) D. The weight shall be 2.75 lbs (1.25 kg).

Warranty information may be found on our website at www.valcom.com/warranty.

TECHNICAL SPECIFICATION

**4-WATT FLEXHORN™
MODEL S-604, S604-25**

Clarity
by Valcom